

An Environment for Excellence

Fall 1992

Enrollment

Report

Comparison of

Fall 1982-1987-1992

Enrollment

Division of Student Services

Presented to
Stockton State College
Board of Trustees
September 23, 1992

DIVISION OF STUDENT SERVICES
Office of the Vice President

Stockton State College
Fall 1992 Enrollment Report
Summary Statements

- The College's enrollment management program for the Fall 1992 semester yielded the most selective admissions process in history for both freshmen and transfer students.
- There are fewer new students (freshmen and transfers) enrolled this term when compared to last year - a greater proportion of the new students are freshmen.
- Academic qualifications as measured by the SAT, high school rank, academic index, and grade-point average have improved for the sixth consecutive year.
- Much of this year's increase in the total SAT score (TSAT = 1025) can be attributed to a rise in verbal scores.
- For the third consecutive year, the College has evidenced enrollment stability with respect to the total number of students enrolled (5,683) and the FTE generated (4,675).
- There is an equal distribution of freshmen, sophomores, juniors, and seniors within our matriculated student population.
- The Division of Natural Sciences and Mathematics has demonstrated steady growth in its proportional share of declared and intended majors.
- Student retention rates remain commendable and, as a result, graduation rates have reached record highs.

STOCKTON STATE COLLEGE
FALL 1992 ENROLLMENT REPORT
Comparison of Fall 1982-1987-1992

	Fall 1982	Fall 1987	Fall 1992
ADMISSIONS SELECTIVITY			
Total Applicant Pool	4086	4423	5593
Freshmen	2786	3199	3692
Transfer and Readmits	1300	1224	1901
% of Freshmen Admitted	60%	45%	43%
% of Transfer/Readmit Admitted	73%	70%	57%
Total Enrolled	1448	1268	1421
Freshmen	833	753	741
Transfer/Readmit	615	515	680
FRESHMEN			
Total Freshmen	833	753	741
Ratio FT	820 (98%)	744 (99%)	724 (98%)
Ratio PT	13 (2%)	9 (1%)	17 (2%)
Average Total SAT	919 TSAT	975 TSAT	1025 TSAT
Average Verbal SAT	442 VSAT	466 VSAT	486 VSAT
Average Math SAT	477 MSAT	509 MSAT	539 MSAT
High School Rank	61 %ile	62%ile	75%ile
Academic Index	197.9 AI	203.5 AI	214.5 AI
Characteristics			
Male	440 (53%)	392 (52%)	325 (44%)
Female	393 (47%)	361 (48%)	416 (56%)
Minority (B/H)	96 (12%)	122 (16%)	101 (14%)
Other Minority (A/AI)	12 (1%)	16 (2%)	23 (3%)
Non-Minority (W)	719 (86%)	614 (82%)	617 (83%)
Unknown	6 (1%)	1 (0%)	0 (0%)
TRANSFERS AND READMITS			
Total Transfers	560	461	605
Ratio FT	445 (79%)	375 (81%)	510 (84%)
Ratio PT	115 (21%)	86 (19%)	95 (16%)
Total Readmits	55	54	75
Ratio FT	31 (56%)	28 (52%)	35 (47%)
Ratio PT	24 (44%)	26 (48%)	40 (53%)

**STOCKTON STATE COLLEGE
FALL 1992 ENROLLMENT REPORT
Comparison of Fall 1982-1987-1992**

	Fall 1982	Fall 1987	Fall 1992
UNDERGRADUATE ENROLLMENT			
Headcount	5056	5122	5683
FTE	4227	4162	4675
Ratio FT	4025 (80%)	3949 (77%)	4400 (77%)
Ratio PT	1031 (20%)	1173 (23%)	1283 (23%)
Characteristics			
Male	2671 (53%)	2624 (51%)	2700 (48%)
Female	2385 (47%)	2498 (49%)	2983 (52%)
Minority (B/H)	439 (9%)	622 (12%)	680 (12%)
Other Minority (A/AI)	44 (1%)	96 (2%)	174 (3%)
Non-Minority (W)	4473 (88%)	4396 (86%)	4829 (85%)
Unknown	100 (2%)	8 (0%)	0 (0%)
Enrollment Status			
Matriculated	4630 (92%)	4537 (89%)	5054 (89%)
Non-Matriculated	426 (8%)	585 (11%)	629 (11%)
Class Level (matriculated only)			
Freshman	1653 (36%)	1426 (31%)	1291 (25%)
Sophomore	1089 (24%)	1152 (25%)	1161 (23%)
Junior	1065 (23%)	1054 (23%)	1354 (27%)
Senior	823 (17%)	905 (20%)	1248 (25%)
UNDERGRADUATE RETENTION			
Fall-to-Spr Retention	91%	93%	95%
Spr-to-Fall Retention	88%	89%	90%
Frosh-to-Soph Overall			
3rd Semester Retention	73%	75%	77%
Minority (B/H) Retention	67%	74%	77%
GRADUATES*			
	788	864	1030

*Fall 1982= FY 1982; Fall 1987 = FY 1987; Fall 1992 = FY 1992

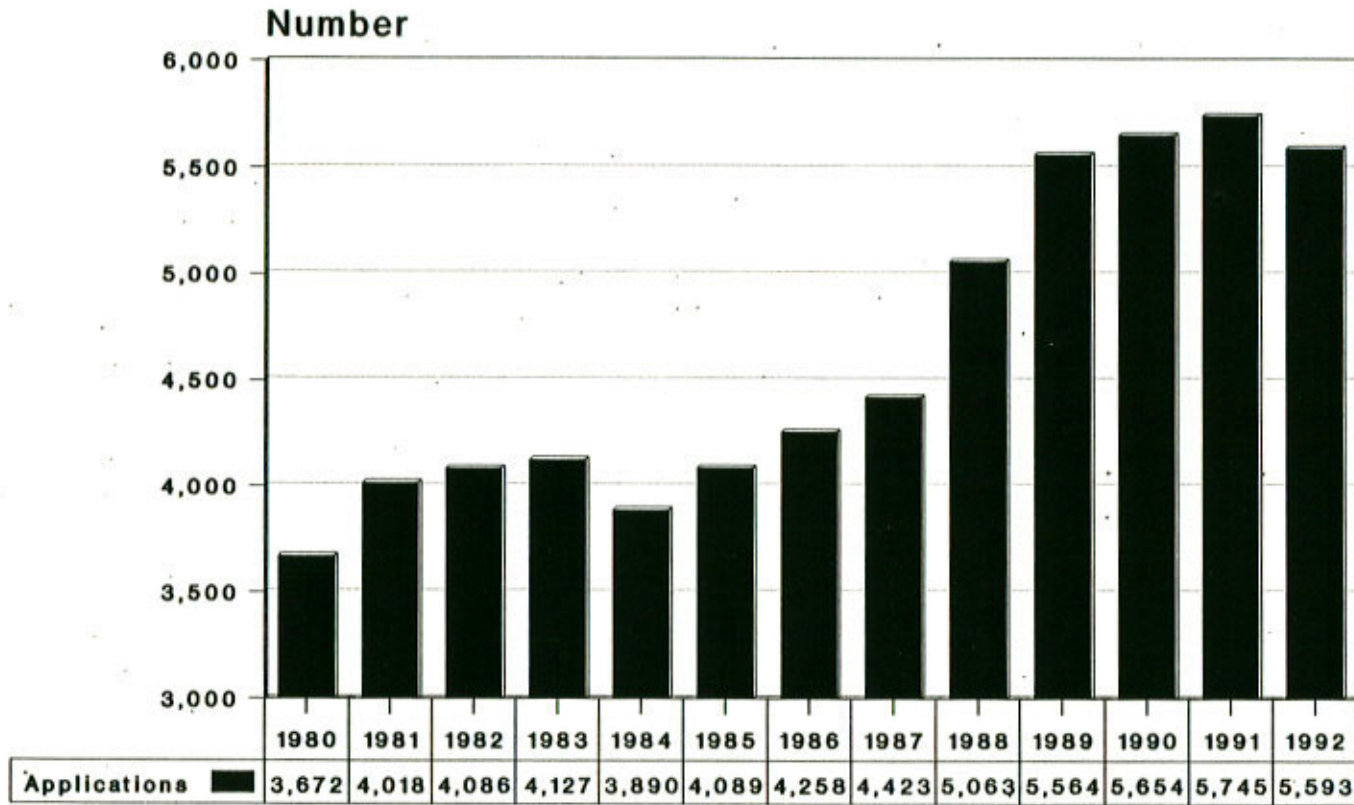
September 23, 1992

STOCKTON STATE COLLEGE
Comparison of 1982-1987-1992 Matriculated Students
By Declared and Intended Major

	Fall 1982	Fall 1987	Fall 1992
# MATRIC STUDENTS	4630	4537	5054
ARHU	335 (7%)	322 (7%)	524 (10%)
ARTS	211 (5%)	160 (4%)	177 (4%)
HIST	38 (1%)	60 (1%)	108 (2%)
LITT/LANG	70 (2%)	88 (2%)	224 (4%)
PHIL	16 (0%)	14 (0%)	15 (0%)
NAMS	795 (17%)	623 (14%)	996 (20%)
BIOL	172 (4%)	162 (4%)	252 (5%)
CHEM	58 (1%)	59 (1%)	42 (1%)
ENVL	269 (6%)	131 (3%)	284 (6%)
GEOL	52 (1%)	21 (0%)	29 (1%)
MARS	168 (4%)	127 (3%)	232 (5%)
MATH	43 (1%)	80 (2%)	98 (2%)
PHYS	33 (1%)	43 (1%)	59 (1%)
PROS	2112 (46%)	2116 (47%)	2010 (40%)
BSNS	1409 (30%)	1567 (34%)	1204 (24%)
INFO	507 (11%)	337 (7%)	213 (4%)
NURS	93 (2%)	90 (2%)	102 (2%)
PHTH	0 (0%)	33 (1%)	303 (6%)
PUBH	30 (1%)	45 (1%)	108 (2%)
SPAD	73 (2%)	44 (1%)	80 (2%)
SOBL	730 (16%)	790 (17%)	939 (19%)
CRIM	231 (5%)	253 (6%)	293 (6%)
ECON	31 (1%)	51 (1%)	40 (1%)
POLS	129 (3%)	143 (3%)	161 (3%)
PSYC	182 (4%)	204 (4%)	271 (5%)
SOCY/ANTH	43 (1%)	41 (1%)	53 (1%)
SOWK	114 (3%)	98 (2%)	121 (2%)
GENS/LIBA	16 (0%)	162 (4%)	55 (1%)
UNDC	642 (14%)	524 (12%)	530 (10%)

Please note percentages have been rounded.

Total Applicants Stockton State College 1980 - 1991

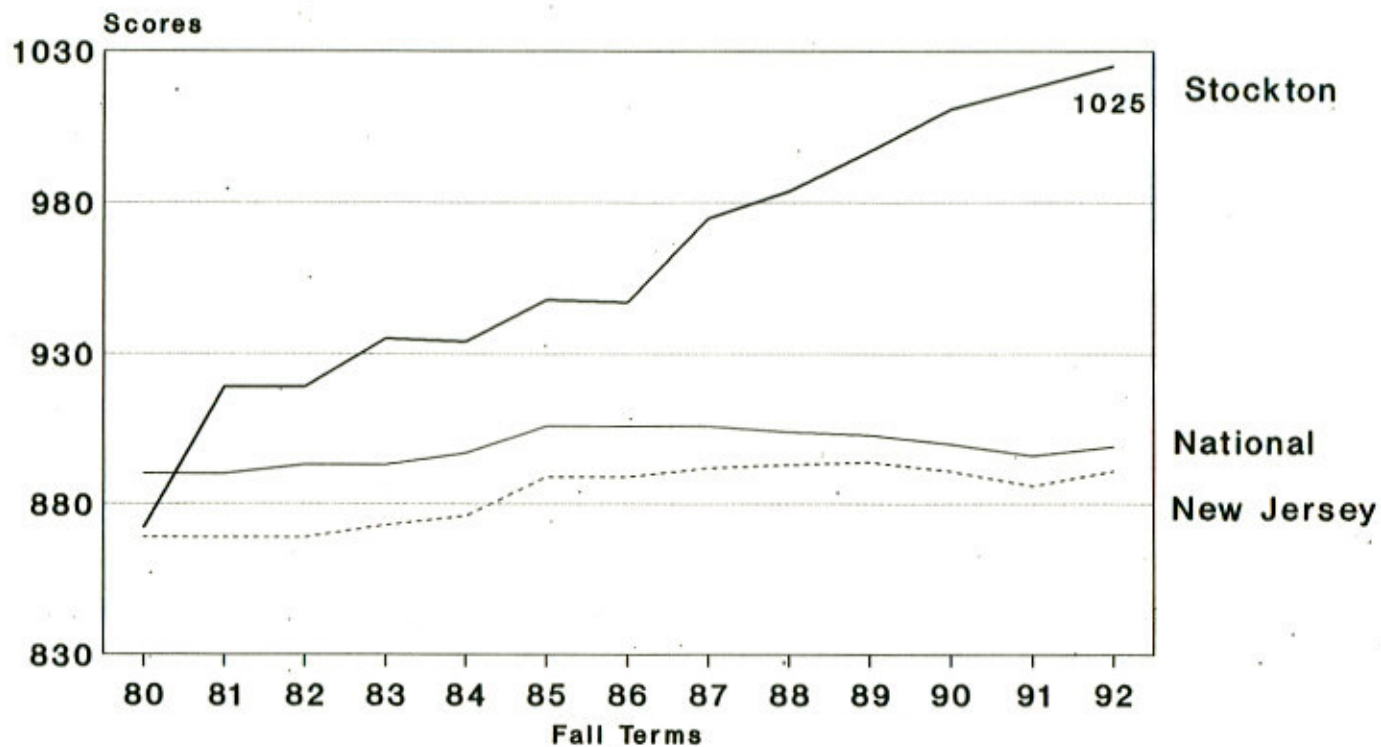


Fall Terms

Stockton reports 5593 applications for admission in Fall 1992. This represents an increase of 52% over the Fall 1980 applicant pool of 3672.

9/21/92

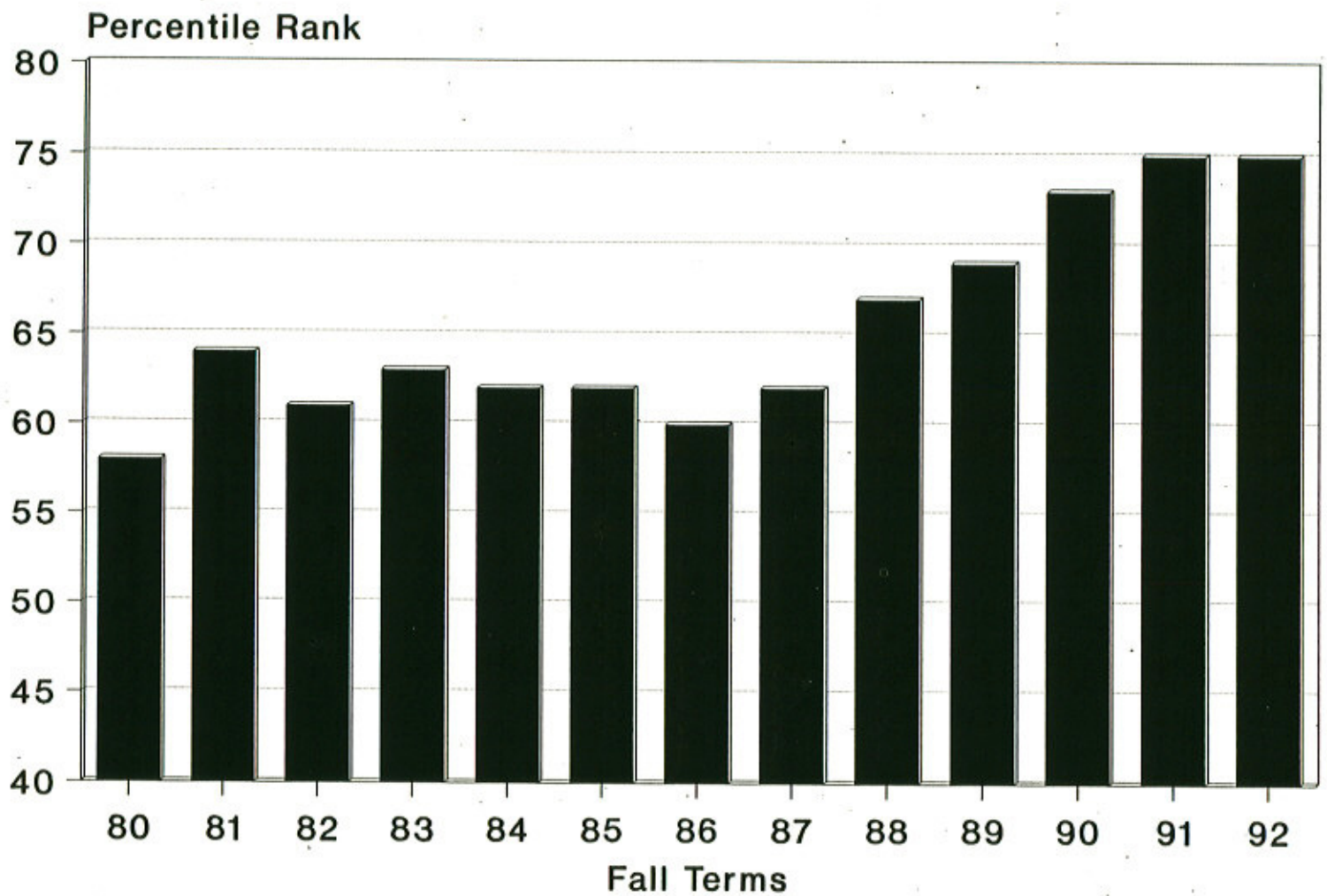
Average Total SAT Scores 1980 - 1992 Stockton Regular Admission versus National and New Jersey College-Bound



Stockton State College reports a 1025 average total SAT score for its regularly admitted freshmen for the Fall 1992 semester. This figure represents a 153 point increase when compared to the Fall 1980 SAT score of 872. As a frame of reference, Stockton's improved SAT profile is significant when compared to the trends that have occurred for college-bound seniors both nationally and statewide.

9/21/92

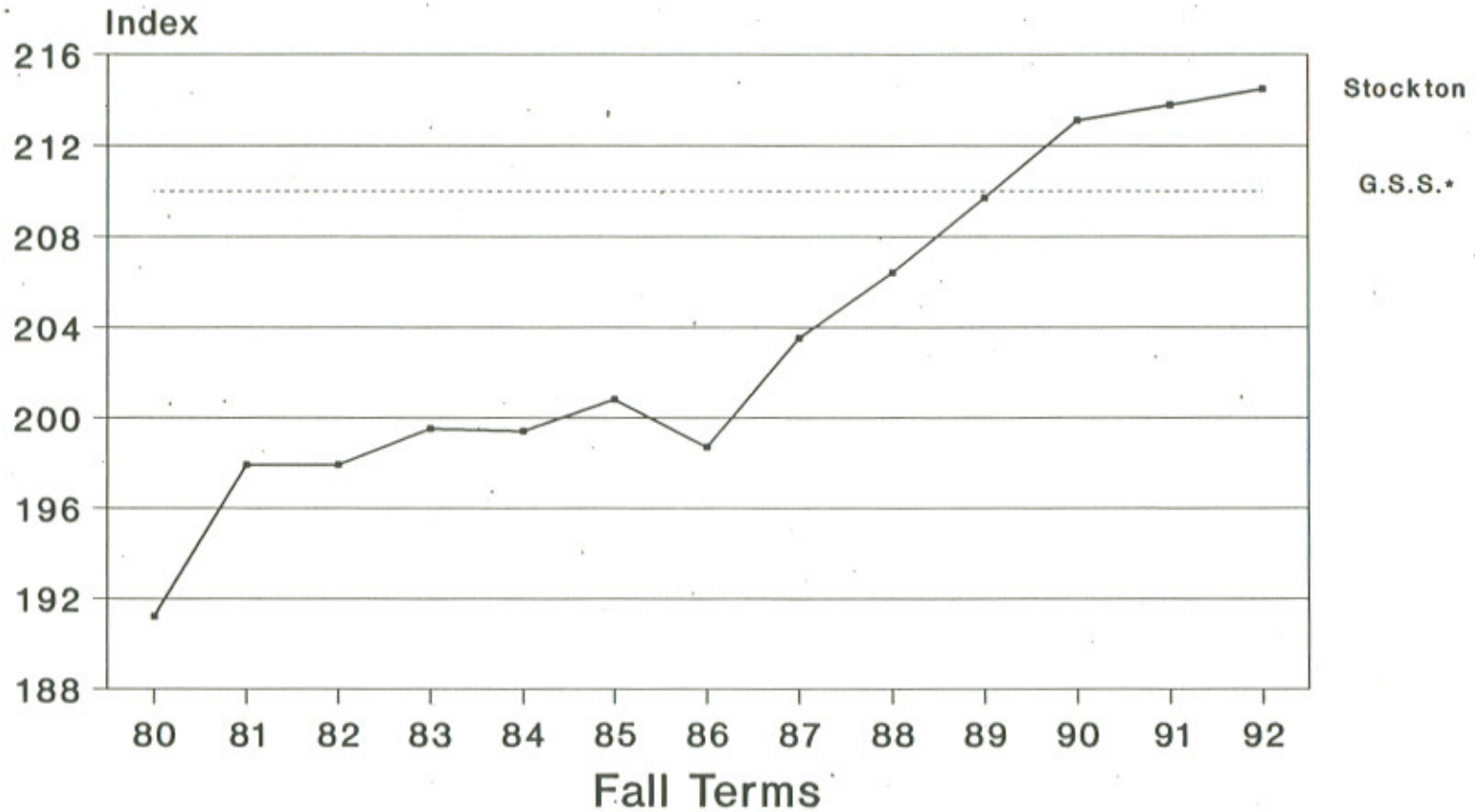
Stockton State College Average High School Rank 1980-1992



The average high school rank of entering freshmen increased from the 58th percentile in Fall 1980 to 75th in Fall 1992.

9/21/92

Academic Index Stockton State College 1980 - 1992

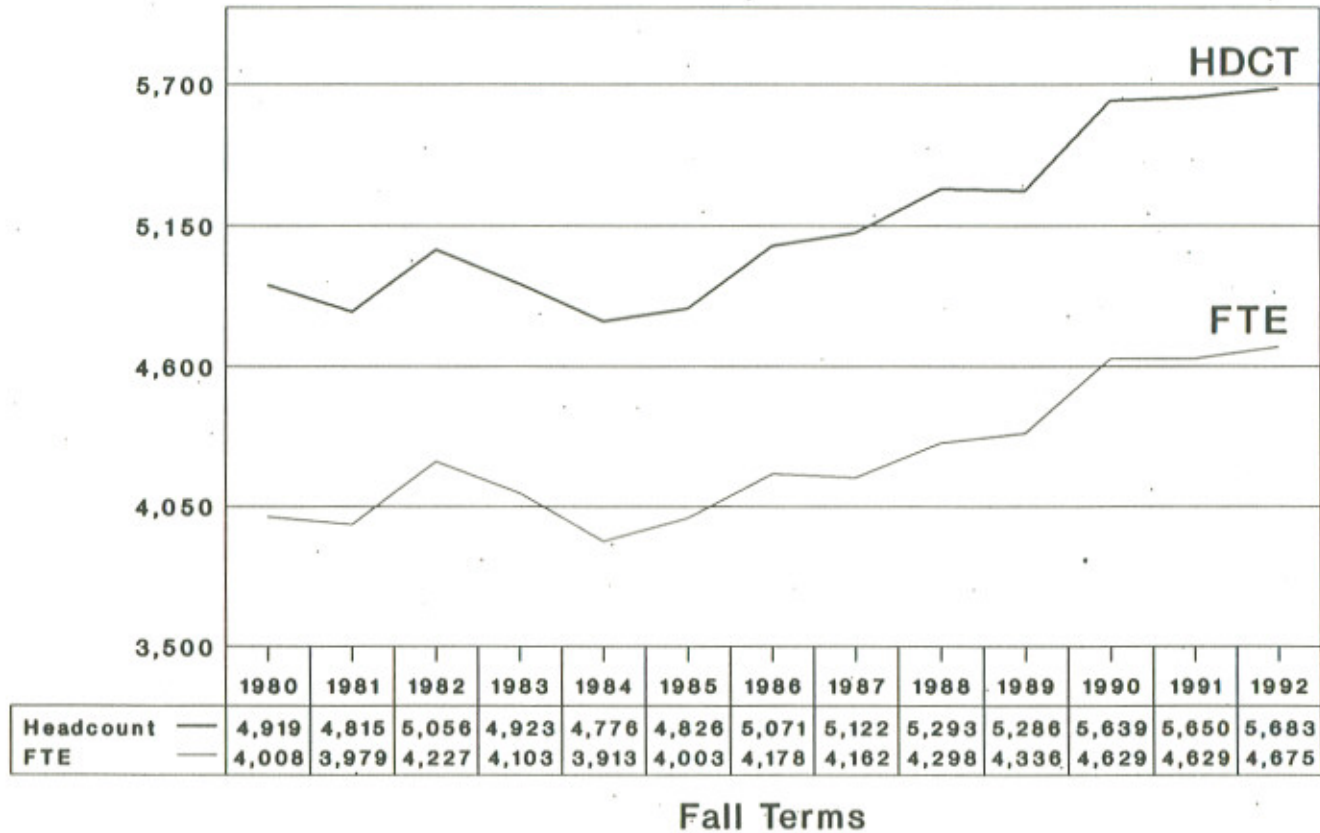


The Academic Index at Stockton has increased
from 191.2 in Fall 1980 to 214.5 in Fall 1992.

*Garden State Scholarship Eligibility

9/21/92

Total Undergraduate Population (HDCT) and Full Time Equivalents (FTE) Stockton State College 1980 - 1992



Stockton reports a headcount of 5,683 for Fall 1992, which represents a 16% increase over Fall 1980. The Fall 1992 FTE is 4,675 which is 17% above the Fall 1980 FTE.

9/21/92