



# The School of Natural Sciences & Mathematics

Provost and Vice President for Academic Affairs  
**Dr. Michael Palladino**

Dean, School of Natural Sciences and Mathematics  
**Dr. Amanda Norvell**

Assistant Dean  
**Dr. Thushani Rodrigo-Peiris**

Professional Services Specialist 3  
**Adam Coopersmith**

Assistant Supervisor  
**Cheryl Wilson**

Principal Clerk Transcriber  
**Yolanda Lively**

Professional Services Specialist 3  
**Adriane Sicknick**

Technical Assistant, HE  
**Jennifer Marcello**

Professional Services Specialist 3  
**Marie Jelinski**

Secretarial Assistant 1  
**Desiree Gaston**

Interim Director  
Coastal Research Center  
**Kimberly McKenna**  
[Click here for Organizational Detail](#)

Director  
Academic Labs & Field Facilities  
**Dr. Hajar Faal**  
[Click here for Organizational Detail](#)

**Biology (21)**  
Adam Aguiar – AC  
Luis Arriaga – TS  
Guy Barbato – AC  
Matthew Bonnan – P  
David Burleigh – AC  
Kevin Coffey – TS  
David Furgione – 3/4 I  
Tim Haresign – AC  
Nathaniel Hartman – AC  
Tara Luke Harmer – P  
Michael Lague – AC

**Chemistry (18)**  
Michael Law – AC  
Margaret Lewis – P  
Craig Lind – AC  
Ekaterina Sedia – P  
Lauren Seyler – AT  
Melanie Schroer – I  
Steven Shaak – 3/4 AT  
Peter Straub – P  
Melissa Zwick – AC  
Vacant – TS

**Environmental Studies (8)**  
Tait Chirenje – P  
Weihong Fan – P  
Jessica Hallagan – AC  
Vashti Mahadeo – TS  
Daniel Moscovici – P  
Matthew Olson – AT  
Catherine Tredick – AC  
Emma Witt – AC

**Geology (2)**  
Matthew Severs – AC  
Jeffrey Webber – AC

**Marine Science (7)**  
Gordon Grguric – AC  
Elizabeth Lacey – AC  
Susanne Moskalski – AC  
Anna Pfeiffer-Herbert – AC  
Mark Sullivan – P  
Christine Thompson – AC  
Camilla Alves Souto – AT

**Mathematics (10)**  
Bradley Forrest – AC  
Renganathan Iyer – AC  
Shannon Keough – TS  
Pamela Kosick – AC  
Suzanne Nezzar – AC  
Brandy Rapatski – AC  
Yujin Shen – AC  
Judith Vogel – P  
Chia-Lin Wu – P  
Vacant – AT

**Physics (10)**  
Neil Aaronson – P  
Benjamin Agyare – AT  
Jeffrey Dukes – TS  
Philip Eaton – AT  
Fang Liu – AC  
John R. Manson – P  
Monir Sharobeam – P  
Yitzhak Sharon – DP  
Joseph Trout – P  
Benita Villar – 2/3 I

Coastal Zone Management (1)  
**M. Shah Khan – AT**

Sustainability (3)  
**Patrick Hossay – P**  
**Ronald Hutchison – AC**  
**Maritza Jaurequi – AC**

**KEY:**  
I – Instructor  
AT – Assistant Professor  
AC – Associate Professor  
DP – Distinguished Professor  
P – Professor  
PCT – Principle Clerk Typist  
PSS – Professional Services Specialist  
SA – Secretarial Assistant  
SCT – Senior Clerk Typist  
TA – Technical Assistant  
TS – Teaching Specialist  
13D – Visiting Professor



**The School of Natural  
Sciences & Mathematics,  
Academic Laboratories &  
Field Facilities**

Dean, School of Natural Sciences &  
Mathematics  
**Dr. Amanda Norvell**

Assistant Director  
Academic Labs & Field Facilities  
**Dr. Christine Schairer**

Director  
Academic Laboratories & Field Facilities  
**Dr. Hajar Faal**

Director  
Marine Science Field Station  
**Steve Evert**

Professional Services Specialist 3  
**Elizabeth Bick-Zimmerman**

Professional Services Specialist 4  
**Nathan Robinson**

Professional Services  
Specialist 4 - 75%  
**David Ambrose**

- Professional Services Specialist 3  
**Lester Block**
- Professional Services Specialist 3  
**Linda Dotts**
- Professional Services Specialist 4  
**William Harron**
- Professional Services Specialist 3  
**John Hallagan**
- Professional Services Specialist 3  
**Eve Jaworski**

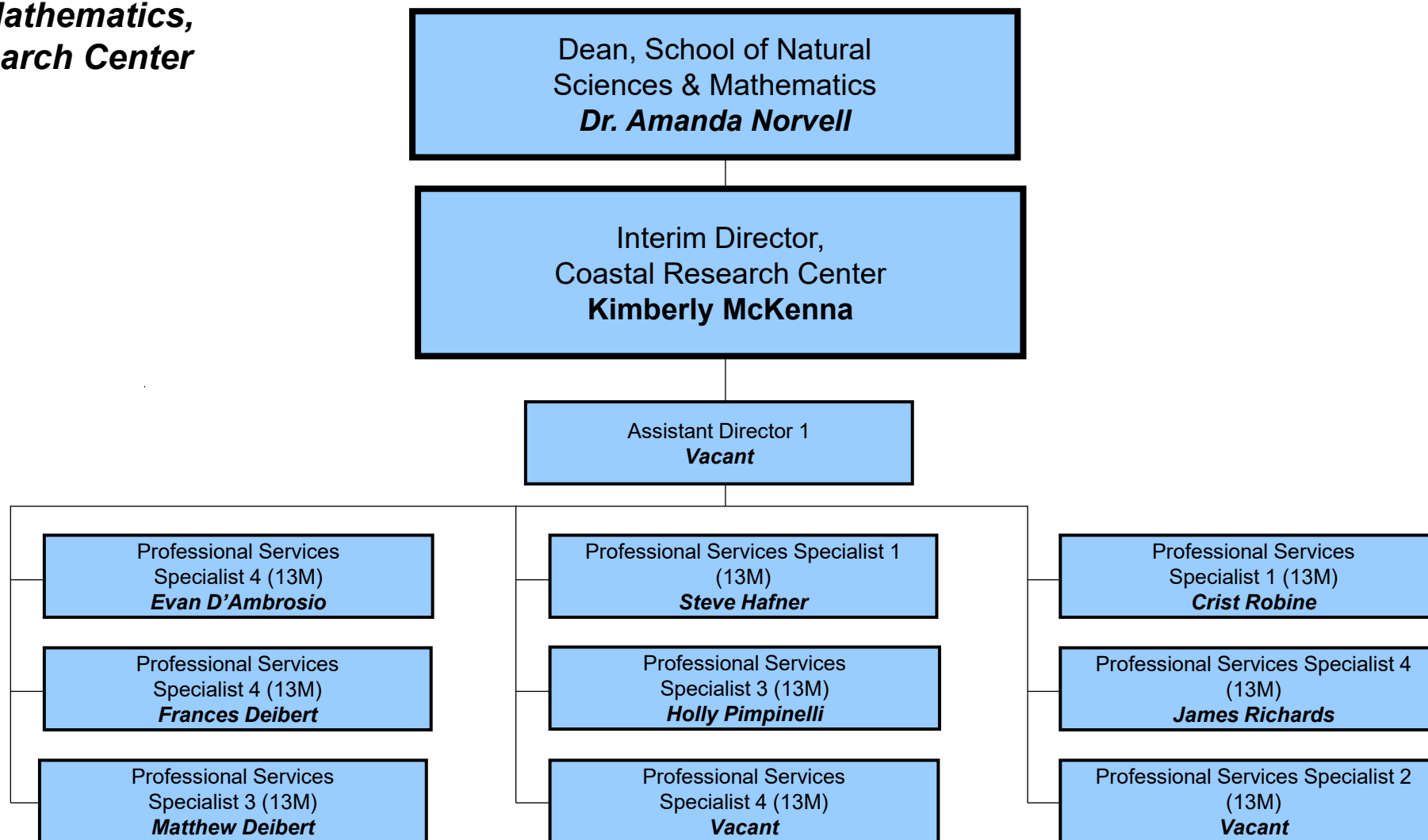
- Professional Services Specialist 2  
**Joan Joseph**
- Professional Services Specialist 4  
(10 months)  
**Sheila Kanaley**
- Principle Clerk Typist  
**Lynn Kinzler**
- Professional Services Specialist 4  
(75%)  
**Melissa Laurino**

- Professional Services Specialist 4  
(75%)  
**Bridget O'Connell**
- Professional Services Specialist 4  
**Gina Petruzzelli**
- Assistant Supervisor  
Academic Laboratory Services  
**John Rokita**
- Professional Services Specialist 4  
**Richard Vetter**

- Professional Services  
Specialist 4 (13M)  
**Vacant**
- Professional Services  
Specialist 3 - 75% (13M)  
**Ryan Hegarty**
- Professional Services  
Specialist 4 (13M)  
**Vacant**
- Professional Services  
Specialist 4 (13M)  
**Vacant**
- Professional Services  
Specialist 4 (13M)  
**Vacant**



**The School of Natural  
Sciences & Mathematics,  
Coastal Research Center**



KEY:  
13M – Grant Funded